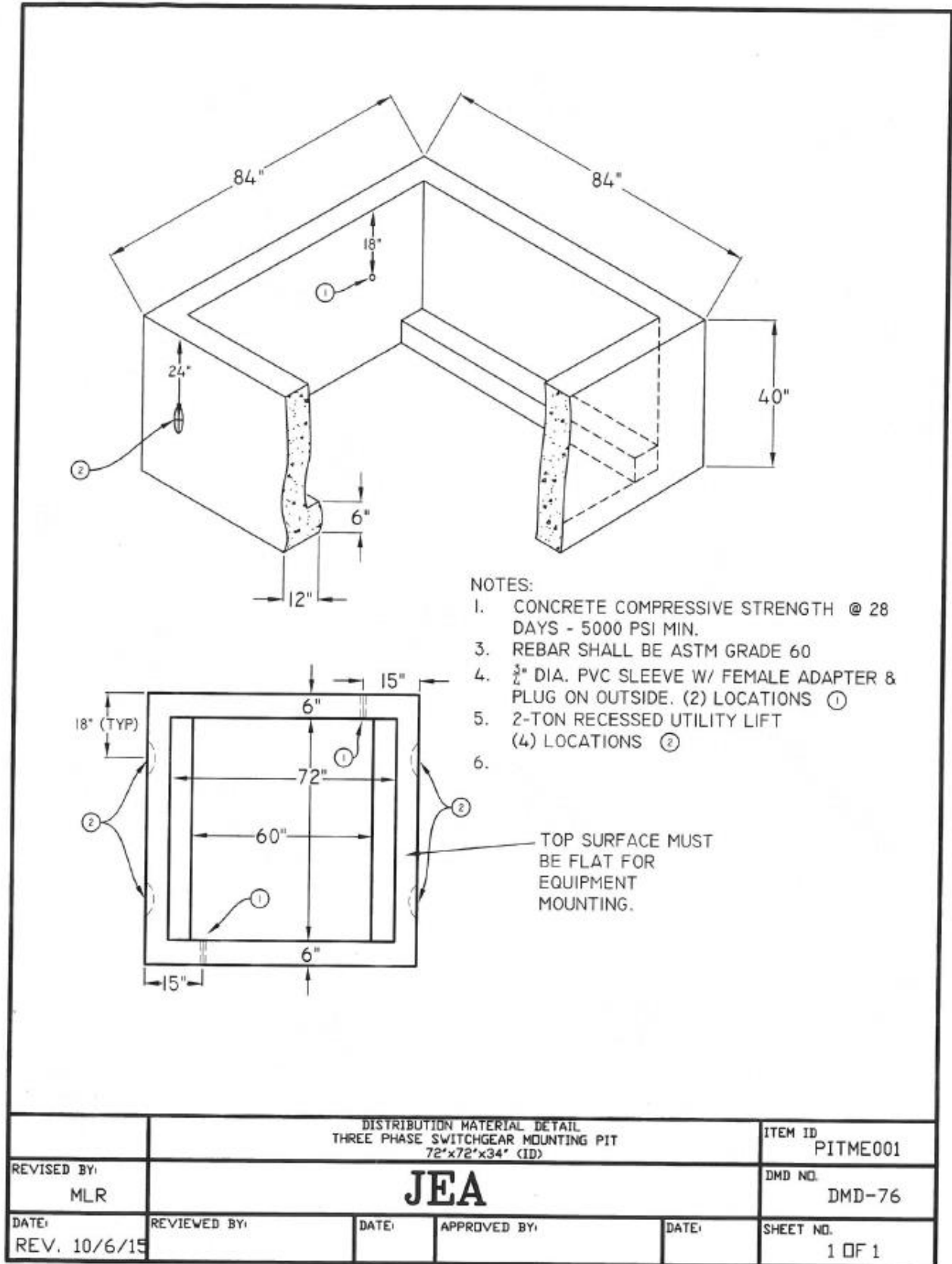


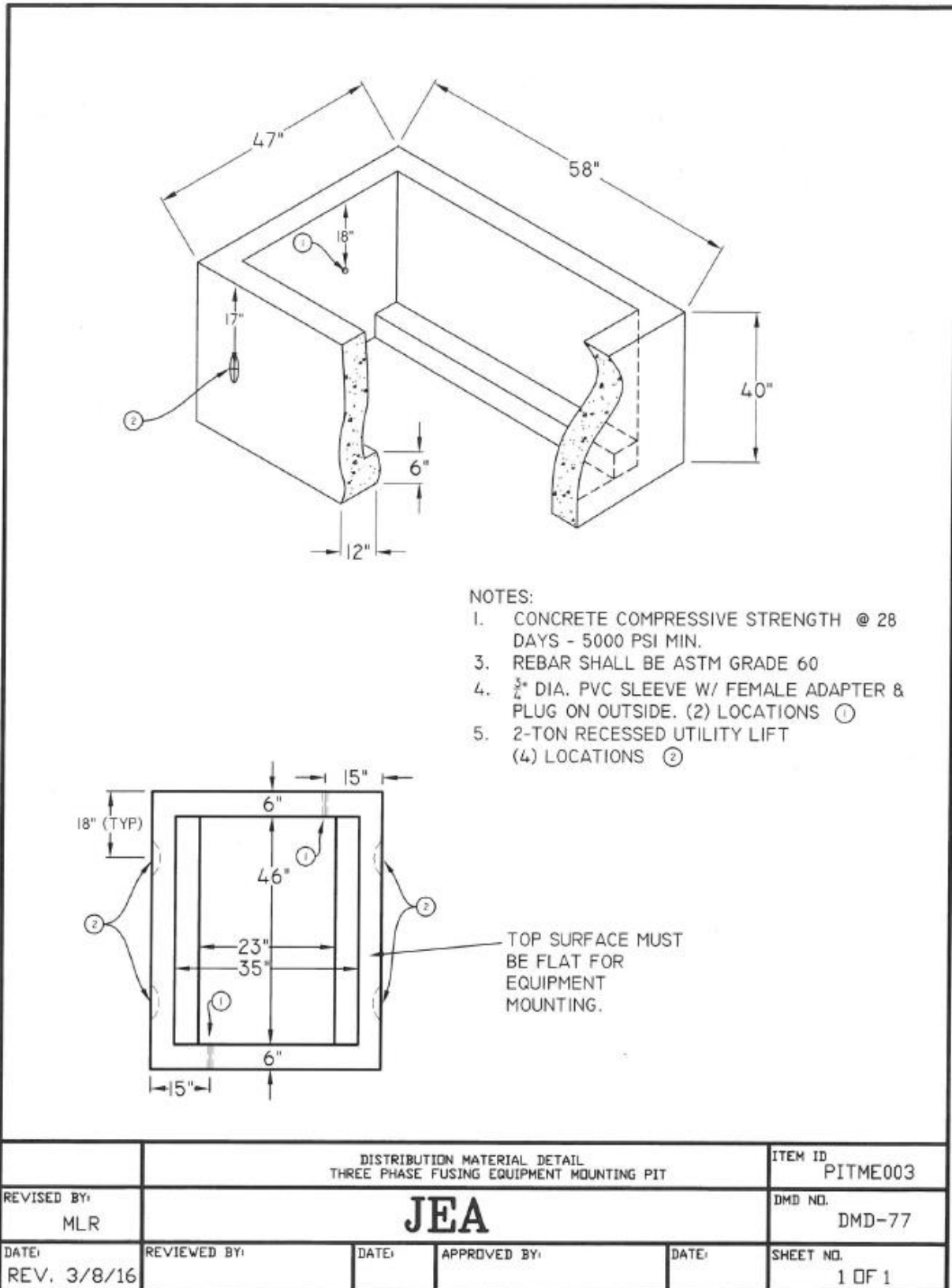
DRAWING DETAILS**EQUIPMENT PITS**

JEA ITEM ID	DESCRIPTION
PITME001	PIT, MOUNTING 3-PHASE SWITCHING EQUIPMENT (INSIDE 72" X 72" & OUTSIDE 84" X 84") SEE SPECIFICATIONS & DMD-76 (WEIGHT 8600 LBS. EACH)
PITME003	PIT, MOUNTING 3 PHASE FUSING EQUIPMENT (INSIDE 46" X 35" & OUTSIDE 58" X 47"), SEE SPECIFICATION AND DMD-77, (WEIGHT 5304 LBS. EACH). REQUIRES A CURRENT NPCA CERTIFICATION FOR THE LAST 5 YEARS.
PITME004	PIT, MOUNTING, EQUIPMENT, SPECIAL APPLICATION, PMH-5 SWITCHGEAR, 68" X 48" DMD-86, (WEIGHT 5330 LBS. EACH)
PITME005	PIT, EQUIPMENT MOUNTING FOR PRIMARY METERING ENCLOSURE PER DMD-75A (WEIGHT 7800 LBS. EACH)

1. **PITME001** PIT, MOUNTING 3-PHASE SWITCHING EQUIPMENT (INSIDE 72" X 72" & OUTSIDE 84" X 84")

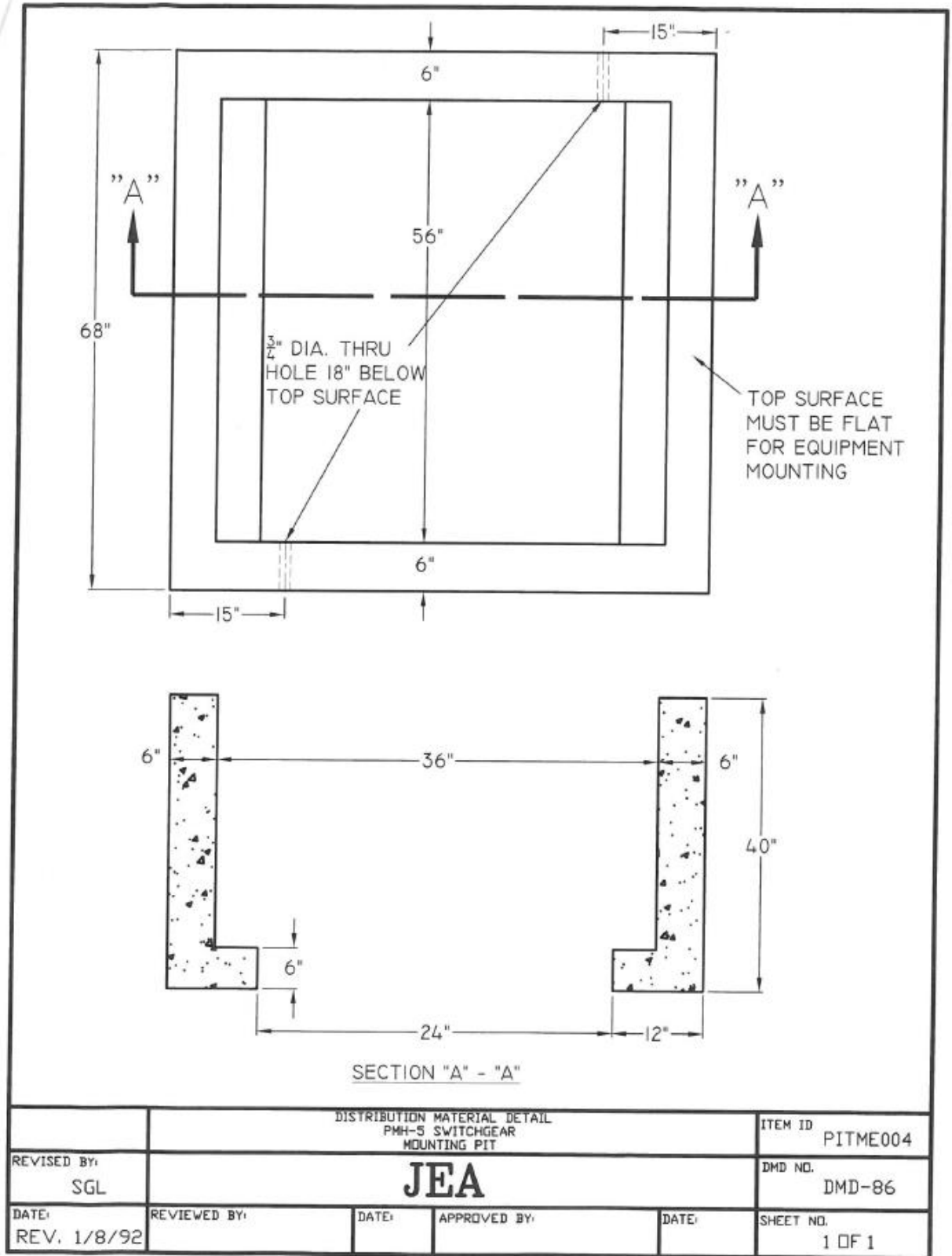


2. PITME003 – PIT, MOUNTING 3 PHASE FUSING EQUIPMENT 46" X 35",



3. PITME004 – PIT, MOUNTING, EQUIPMENT, SPECIAL APPLICATION, PMH-5 SWITCHGEAR, 68" X 48"

raso



4. PITME005 - PIT, EQUIPMENT MOUNTING FOR PRIMARY METERING ENCLOSURE

